

# Ceiling Clip System

GKD BIM models and more at:

This mounting system uses a hidden clip developed by GKD for open, accessible ceilings that attaches to the metal fabric panel and then to the framework above the mesh for a clean appearance and secure installation. Note: Max. ceiling panel size 8 ft x 8 ft.

### Applications

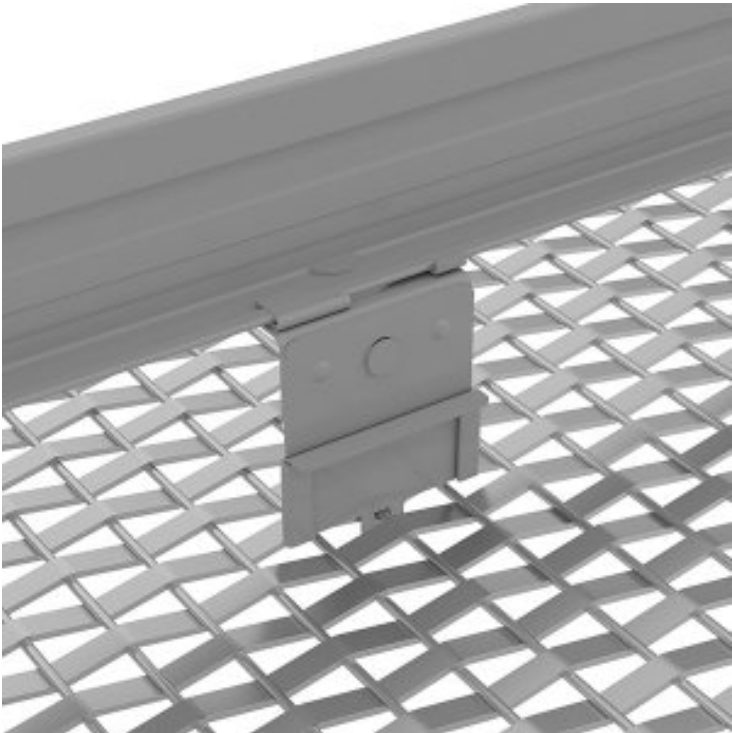
Sound-Dampening Metal Mesh Panels  
Metal Mesh Ceiling Panels

### Metal Fabrics

Atlantic  
Atlantic Lite  
Ellipse 14  
Omega 226  
Tucana  
  
Atlantic Bronze  
Delta 30  
Ellipse 52  
Tigris PC

### North American Headquarters

North America  
GKDMETALFABRICS  
825 Chesapeake Drive  
Cambridge MD 21613  
Direct: 410.901.8428 or  
410.901.8429  
metalfabrics@gkdusa.com



# Ceiling Clip System

