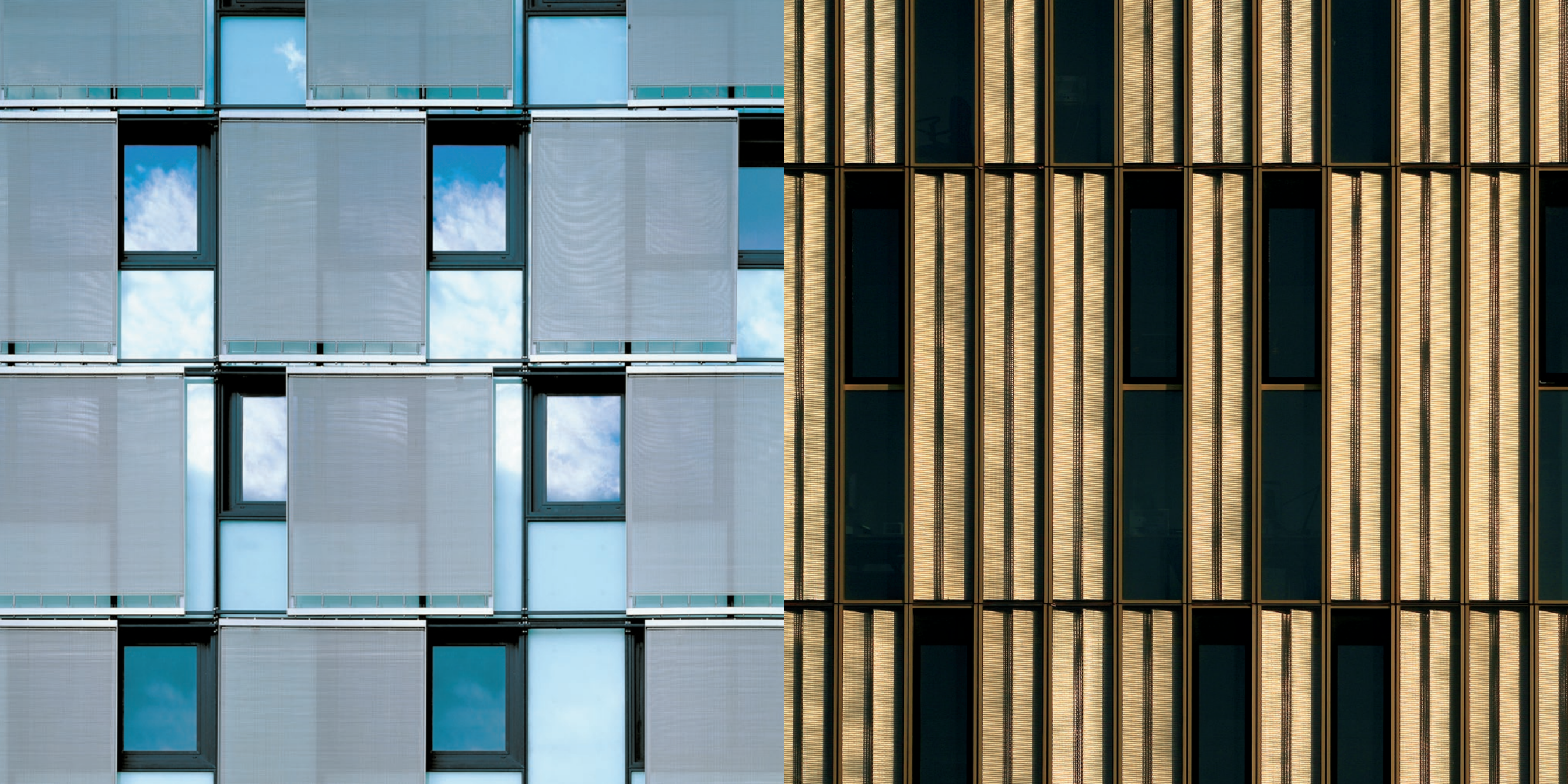


# The Architecture of Metal Fabrics







01	Introduction	50	Yankee Stadium
02	A Design-Build Solution	54	Juan Valdez Café
04	Capital Gate Tower	56	Oxnard Civic Center
06	American Airlines Arena	58	Elwick Place
08	Samsung American Headquarters	60	Holmenkollen
10	European Court of Justice	62	Kunsthalle Mannheim
12	GKD Headquarters	64	Henry Madden Library CSU Fresno
16	Piazza del Duomo	66	Kauffman Center for the Performing Arts
18	Brookline Place	70	California ISO Headquarters
20	Children's Activity Center	72	UF Research and Academics Center
22	Stanford University Bass Biology Building	74	Tonhalle Dusseldorf
24	Louis Vuitton Atelier	76	Cleveland Institute of Art
26	Chicago Art Institute	78	Ascot Racecourse
28	Beijing National Opera	80	Turkish Contractors Association Headquarters
30	Rallye BMW	82	Piper High School
32	Paris Longchamp	84	Newark Liberty International Airport
36	Koningin Elisabethzaal	86	Union Presbyterian Seminary
38	Raiffeisenlandesbank Raaba	88	FIFA World Headquarters
40	École d'Art de Calais	92	Index
42	Tencent Headquarters		
44	Mumuth Music and Theater School		
46	Phelps Dunbar		
48	City of Hope Medical Center		

GKD Metal Fabrics are technologically advanced woven metal fabrics suitable to large or small scale applications, both interior and exterior. We provide a complete design-build solution, custom engineering and installing each project with proprietary attachments. Our metal fabrics are manufactured on four continents, adding drama and beauty to great architecture throughout the world.

# A Design-Build Solution

**A Turnkey Product**  
When you specify GKD metal fabrics, we will work with you on concept development, design, engineering, fabrication, delivery and on-site installation, including the hardware for attachment. Our team of professionals

is accustomed to working worldwide with the most demanding designs and programs, collaborating with your team to realize your vision — without compromise.

**Your Way**  
We encourage our clients to order swatches in a made-to-order sample box or in our signature box that contains our most popular weaves. But your choices don't end there. Most GKD metal fabrics can be customized

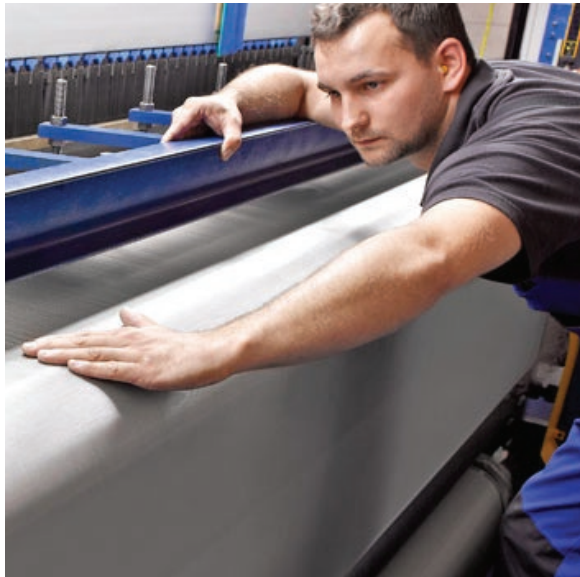
to fit your design needs. Working within the specifications of our looms, we can alter the warp and weft of a product to yield a different appearance or functionality. We are always happy to develop a custom design.

**For the Long Haul**  
GKD metal fabrics are the smart choice — environmentally friendly, durable and virtually maintenance-free. Our stainless steel is an energy efficient product to manufacture, made with recycled material as

well as being recyclable itself. Non-corrosive, GKD metal fabrics can be simply washed with water if it ever becomes necessary.

**Around the Globe**  
Founded in Düren, Germany in 1925, GKD has grown to be a truly global organization throughout the subsequent century. With production facilities in Europe, North America, South

America, Africa and Asia, we have branches, representations and partners in over 30 countries. GKD-USA Inc. is headquartered in Cambridge, Maryland.







Custom metal fabric flows around the world's furthest leaning tower, descending from the 19th floor to eliminate over 30% of the sun's heat. The "splash" twists around the building towards the south to shield the tower as much as possible from harsh direct sunlight.

**Project**  
Capital Gate Tower

**Application**  
Façades  
Solar Management

**Product**  
Tigris 2100

**Attachment Method**  
Flats with clevis

**Architect**  
RMJM Architects

**Size**  
52,905 ft²



Project  
American Airlines Arena

Product  
Mediamesh V5xH5.0

Architect  
A2a Media

Application  
Mediamesh

Attachment Method  
Woven in bar eyebolts  
top and bottom

Size  
3,400 ft<sup>2</sup>

The Miami streetscape is transformed into a dynamic display of graphics and light with this transparent Mediamesh display, offering sponsors an opportunity to reach over twenty million commuters and visitors a year.

06/07





**Project**  
Samsung American  
Headquarters

**Application**  
Parking Façades

**Product**  
Omega 1520

**Attachment Method**  
Extended loops with  
hook at top

**Architect**  
NBBJ Architecture

**Size**  
36,000 ft<sup>2</sup>



08/09

At Samsung's US headquarters, the parking structure is enveloped by metal fabric. An abstract design alludes to a circuit board, reflecting the corporation's strength in technology.



**Project**

European Court of Justice

**Application**

Ceilings  
Façades  
Partitions  
Specialties  
Walls

**Product**

Anodized Escale 5x1

**Attachment Method**

Frames

**Architect**

Dominique Perrault

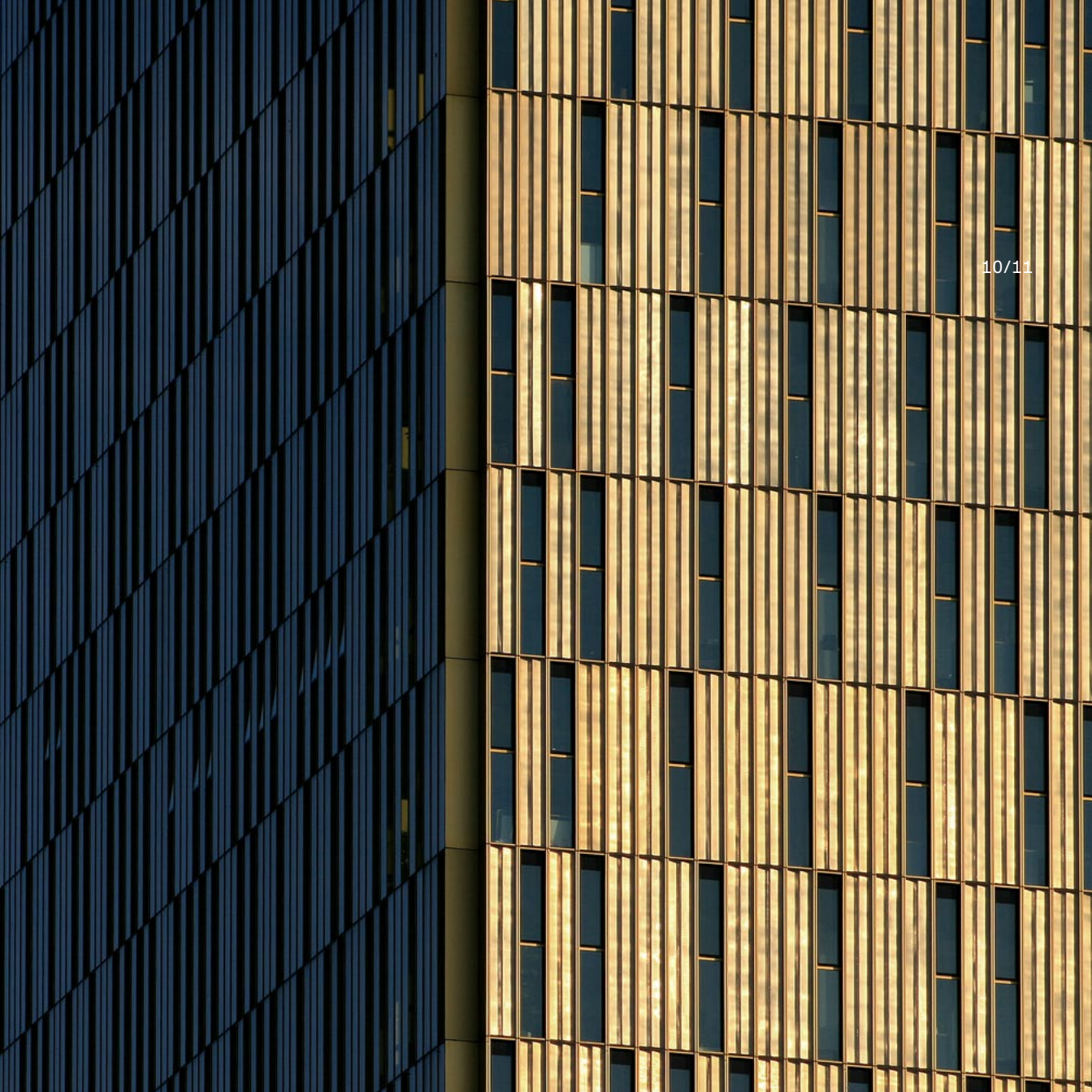
**Size**

233,000 ft²



GKD metal fabrics are used inside and out at the European Court of Justice in Luxembourg. In the grand courtroom, a bronze anodized fabric is suspended from the ceiling, creating a modern interpretation of the classic dome.

Pleated panels on the exterior façades of the two 24-story towers are formed using an anodized metal fabric especially developed for this project, providing solar shading for the office spaces.





**Project**  
GKD Headquarters

**Application**  
Ceilings  
Solar Management  
Specialties  
Walls

**Product**  
Delta 16  
Escale 7x1  
Lago  
Omega 1500-1520-216  
Square

**Attachment Method**  
Extended loop with  
eyebolts  
Woven in bar eyebolts  
top and bottom  
Frame

**Architect**  
Dominique Perrault and  
Ziger/Snead

**Size**  
2,500 ft²





GKD's North American headquarters, recipient of an "AIA Maryland Design Award" is a showcase for the firm's offerings, featuring metal fabric façades, and tiled, draped and framed ceilings. Beautiful and energy efficient, the

building receives the benefits of solar management, natural lighting and natural ventilation.







**Project**  
Piazza del Duomo

**Application**  
Mediamesh

**Product**  
Mediamesh V5xH5.0

**Attachment Method**  
Woven in bar eyebolts  
top and bottom

**Architect**  
ag4

**Size**  
5,240 ft<sup>2</sup>

Amidst Renaissance architecture in Milan, twenty-first century Mediamesh delivers a powerful message with its LED technology.





#### Project

Brookline Place

#### Product

Custom Tigris PC

#### Architect

Elkus Manfredi

#### Application

Parking Façades

#### Attachment Method

Flats with clevis

#### Size

12,835 ft<sup>2</sup>



Minutes outside Boston, the mixed-use Brookline Place is the hub of its eponymous suburb. For the six-story parking lot, the architects chose to elevate their subdued design with a custom metal fabric.





**Project**  
Children's Activity Center

**Product**  
Escale 7x1

**Architect**  
Stephan Bradley  
Architects

**Application**  
Façades

**Attachment Method**  
Eyebolts

**Size**  
59,200 ft<sup>2</sup>

Flexible metal fabric  
conforms to irregular  
shapes and compound  
curves, transmitting light  
and air while concealing  
the building utilities in  
the school.





#### Project

Stanford University  
Bass Biology Building

#### Product

Mediamesh V4xH5.0  
Tigris

#### Architect

Flad Architects,  
Anderson Krygier

#### Application

Mediamesh

#### Attachment Method

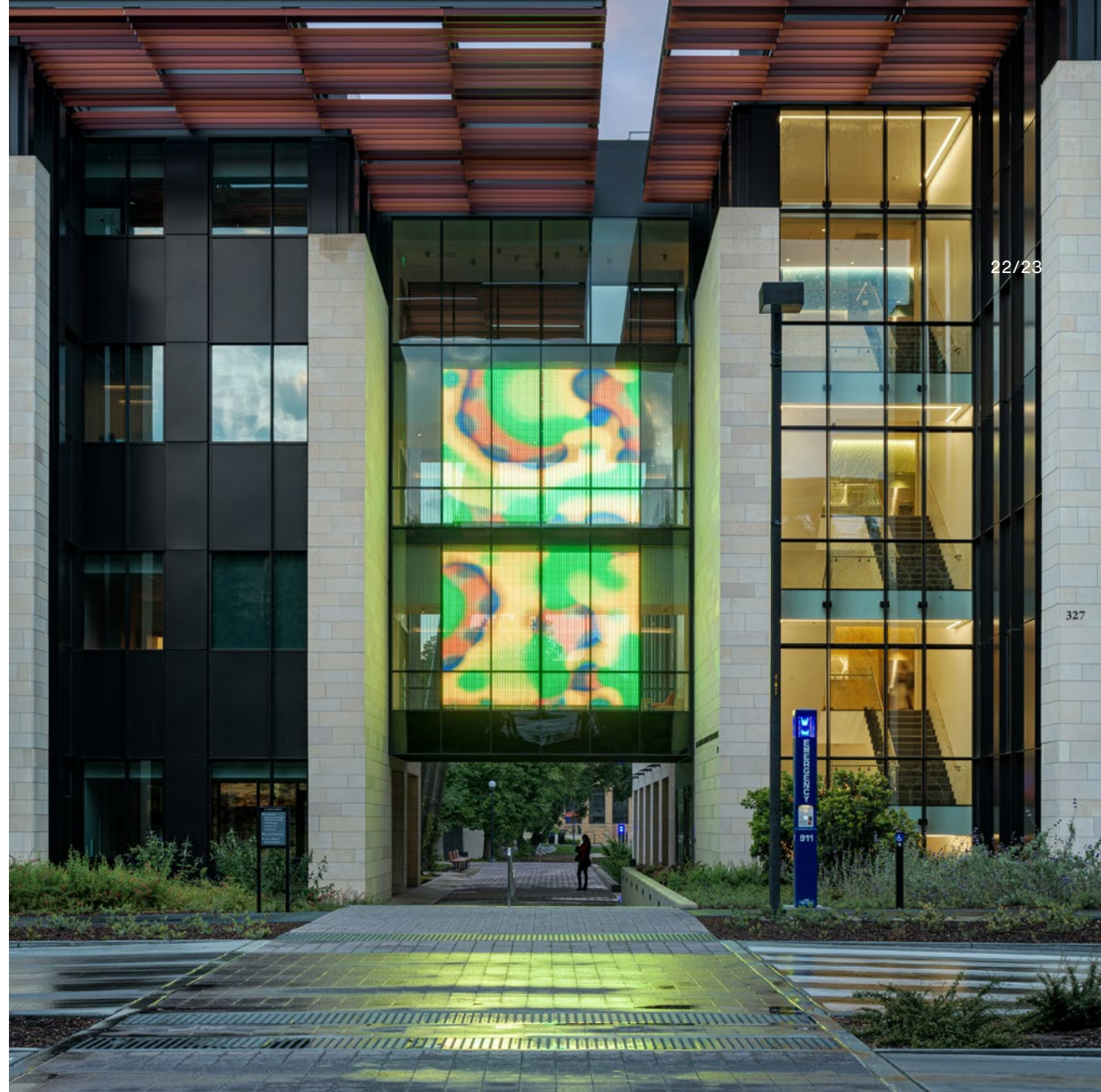
Woven in bar eyebolts  
top and bottom

#### Size

770 ft<sup>2</sup>



A Mediamesh display in the Bass Biology Building at Stanford University displays biology-themed abstract images that can be controlled through a touch-screen interface.





Project  
Louis Vuitton Atelier

Application  
Façades  
Solar Management

Product  
Omega 1510

Attachment Method  
Flats with clevis

Architect  
Sandrolini Architectural  
Firm

Size  
21,800 ft<sup>2</sup>

24/25



Woven metal fabrics clad the outer façades and courtyard sunscreens of this shoe factory outside Venice, one of several Louis Vuitton buildings that utilize GKD products. A functional solution, combining weather resistance and sun

protection, they are simultaneously a manifestation of luxury, embodying the elegance and sophistication of the brand.





**Project**  
Chicago Art Institute

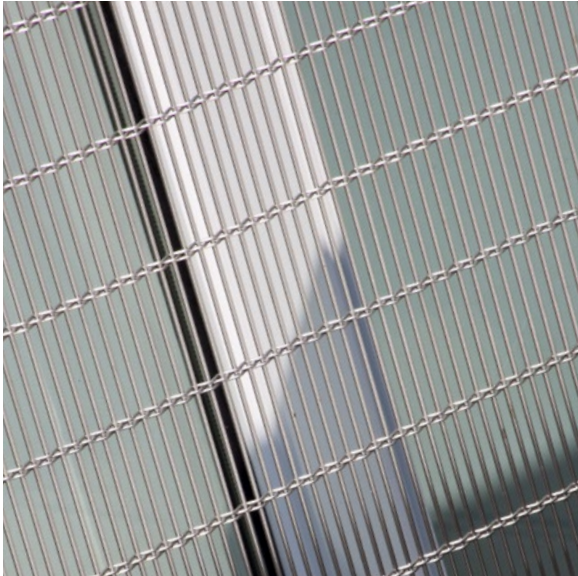
**Product**  
Tigris PC

**Architect**  
Renzo Piano

**Application**  
Safety and Security

**Attachment Method**  
Flats with flat eye

**Size**  
6,000 ft<sup>2</sup>



Throughout this celebrated museum, framed, woven metal fabric panels are used on walkways to provide safety and security with elegance. The inherent transparency of the fabric allows visitors to enjoy views of the magnificent Chicago skyline.



**Project**  
Beijing National Opera

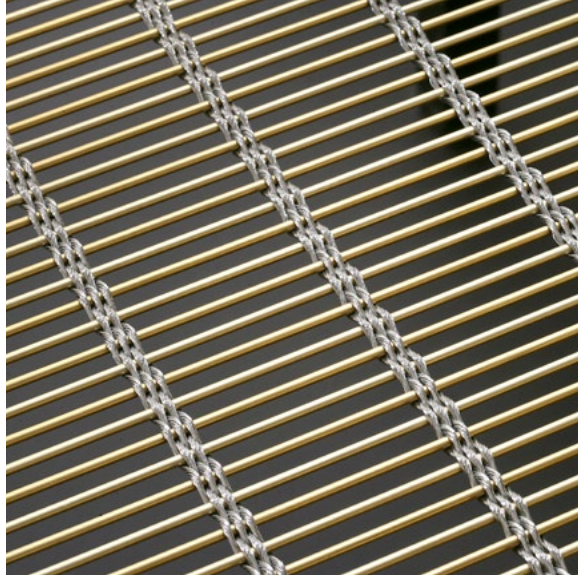
**Product**  
Baltic  
Custom Fabric

**Application**  
Partitions

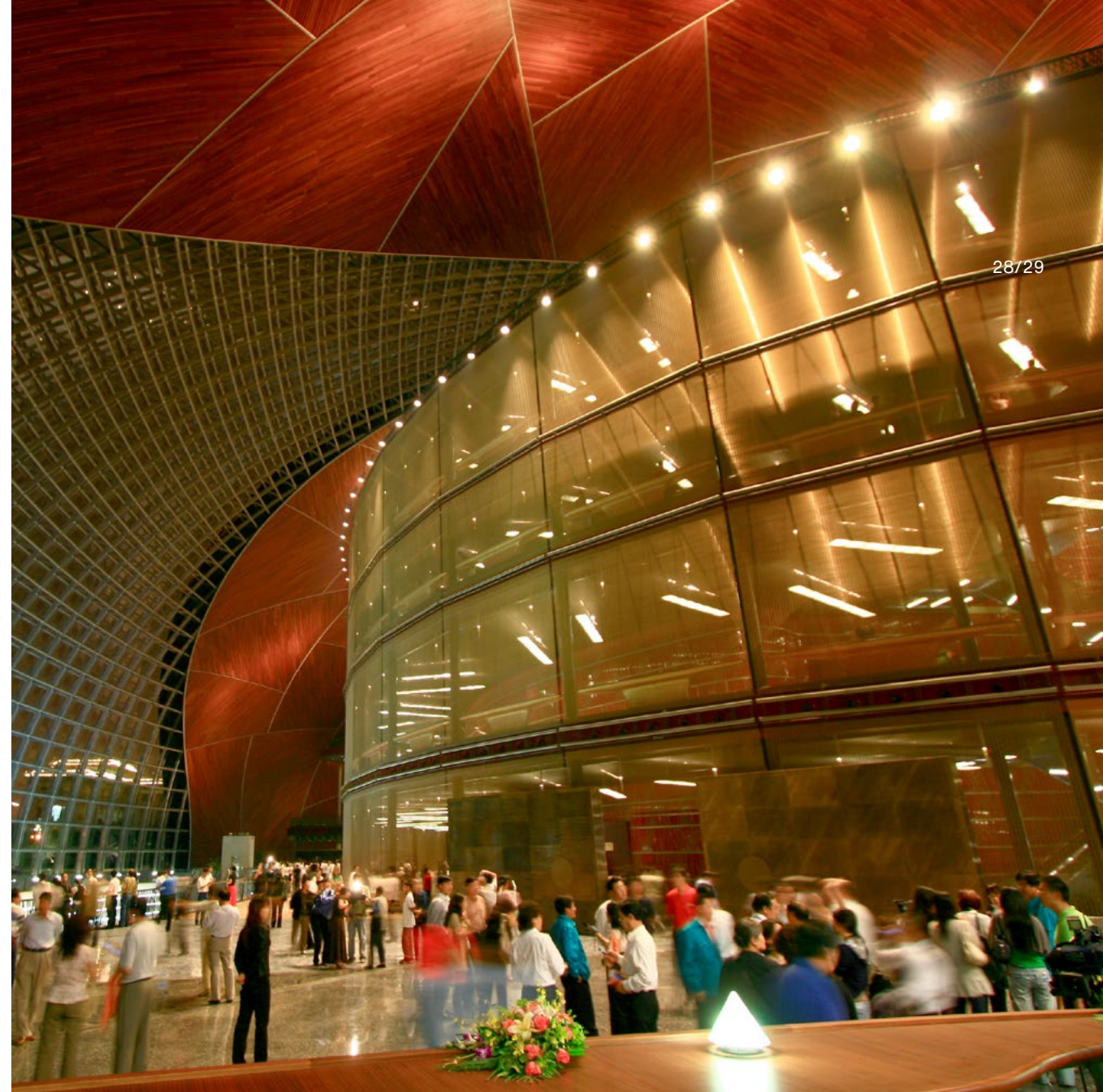
**Attachment Method**  
Flats with clevis

**Architect**  
Paul Andreu, ADP Paris

**Size**  
5,400 ft<sup>2</sup>



A scrim-like wall of bronze anodized metal fabric plays a dramatic supporting role within this landmark opera house in Beijing.





**Project**  
Rallye BMW

**Product**  
Omega 1510

**Architect**  
HLW International, LLC

**Application**  
Etched Graphics  
Façades

**Attachment Method**  
Woven in bar eyebolts,  
top and bottom

**Size**  
6,050 ft<sup>2</sup>

30/31

GKD's precision etched graphic process brings the brand to life at this BMW dealership in New York. As sunlight shifts throughout the day, the appearance of the media changes continuously.







**Project**  
Paris Longchamp

**Product**  
Escale 7x1

**Architect**  
Dominique Perrault

**Application**  
Acoustic  
Façades  
Solar Management

**Attachment Method**  
Frames

**Size**  
22,740 ft<sup>2</sup>





French architect Dominique Perrault re-designed this historic venue from the ground up after winning an international design competition, making extensive use of golden steel metal fabric.

Perrault frequently uses GKD metal fabrics for his projects as they follow his key design principles of movement and transparency.







**Project**  
Koningin Elisabethzaal

**Application**  
Acoustic  
Ceilings  
Walls

**Product**  
Omega 216  
Omega 1520

**Attachment Method**  
Frames

**Architect**  
Ian Simpson:  
Acoustic Planning  
& Kirkegaard Associates

**Size**  
17,200 ft<sup>2</sup>

36/37

Gold-colored metal fabric lines the ceiling and stage wall of this concert hall, ensuring an ideal combination of acoustics and aesthetics. Each of the 204 panels was specifically fitted, the ceiling fabric including precisely measured cutouts for lights.





A three-story logo has been applied with a proprietary paint spraying technology. Visible from great distances, it adds an element of branding to this dramatic building, while the custom metal fabric manages the sunlight within.

**Project**  
Raiffeisenlandesbank  
Raaba

**Application**  
Façades  
Solar Management

**Product**  
Tigris 2100

**Attachment Method**  
Flats with clevis

**Architect**  
Strohecker Architecture

**Size**  
2,650 ft²





**Project**  
École d'Art de Calais

**Application**  
Façades  
Solar Management

**Product**  
Gold Anodized Aluminum  
Escale 7x1

**Attachment Method**  
Roundbar with eyebolts

**Architect**  
Arc.Ame

**Size**  
2,700 ft²

The futuristic architecture of this art school in Calais provides a beautiful counterpoint to the much older buildings of the ancient city, while its gold anodized aluminum mesh panels provide solar management and a signature look.







**Project**  
Tencent Headquarters

**Application**  
Partitions  
Safety and Security

**Product**  
Omega 1510

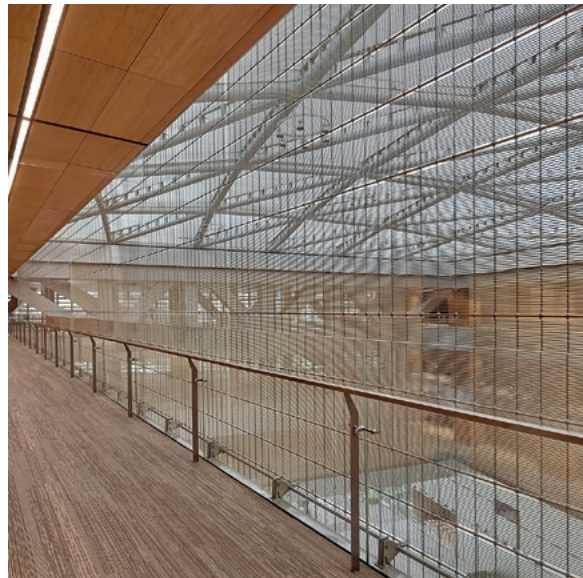
**Attachment Method**  
Flats with clevis

**Architect**  
NBBJ Architecture

**Size**  
20,000 ft<sup>2</sup>

42/43

Gold-colored, anodized aluminum fabric enhances the offices of Chinese internet giant Tencent, the soft golden tone lending the atrium and lobby a warmth to contrast with its cool gray marble floor, walls, and aluminum screen.





#### Project

Mumuth Music and  
Theater School

#### Product

Omega

#### Architect

Ben van Berkel, UNStudio

#### Application

Façades  
Solar Management

#### Attachment Method

Custom flat bar

#### Size

43,000 ft<sup>2</sup>



A performance center  
becomes a performance  
itself as daylight fades.  
Woven stainless steel,  
reflective during the day,  
becomes transparent  
at night to reveal the  
activities within.







**Project**  
Phelps Dunbar

**Product**  
Futura 3110

**Architect**  
Gensler

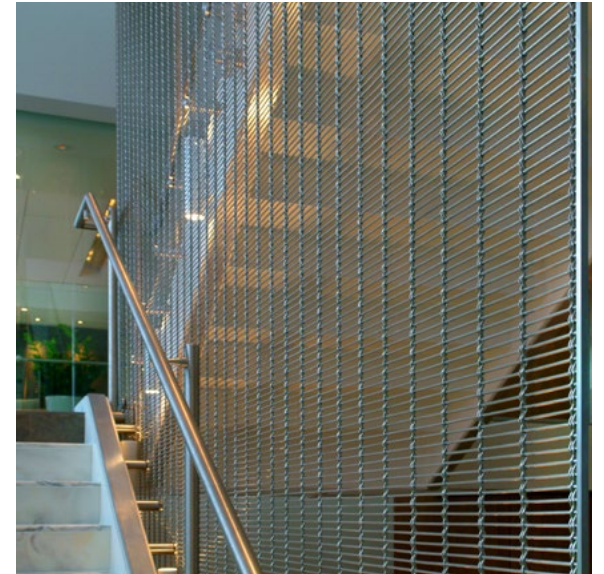
**Application**  
Partitions  
Safety and Security  
Specialties

**Attachment Method**  
Flats with clevis

**Size**  
430 ft<sup>2</sup>

46/47

Metal fabric partitions add a distinctive feature to this Louisiana law office, maintaining safety while preserving a feeling of openness.





Project  
City of Hope Medical  
Center

Application  
Façades  
Solar Management

Product  
Futura 3110

Attachment Method  
Woven in bar hooks  
and springs

Architect  
NBBJ Architects

Size  
5,460 ft<sup>2</sup>

48/49

The sweeping airfoil of this architectural façade offers transparent sun control to this biomedical cancer research center in Southern California.





**Project**  
Yankee Stadium

**Application**  
Etched Graphics  
Partitions  
Safety and Security  
Walls

**Product**  
Custom Tigris  
Omega 1505 PC  
Tigris PC  
  
**Attachment Method**  
Flat and angle frames

**Architect**  
Populous  
  
**Size**  
33,000 ft²







Numerous metal fabrics are used throughout world-famous Yankee Stadium, demonstrating the way different products can be combined to form an aesthetically cohesive statement.



#### Project

Juan Valdez Café

#### Product

Omega 1510

#### Architect

Hariri & Hariri

#### Application

Etched Graphics  
Façades  
Solar Management

#### Attachment Method

Extended loops  
with springs

#### Size

2,500 ft<sup>2</sup>



Juan Valdez's familiar portrait is etched onto the tensioned, woven metal fabric of his namesake café in New York City.





**Project**  
Oxnard Civic Center

**Application**  
Façades  
Solar Management

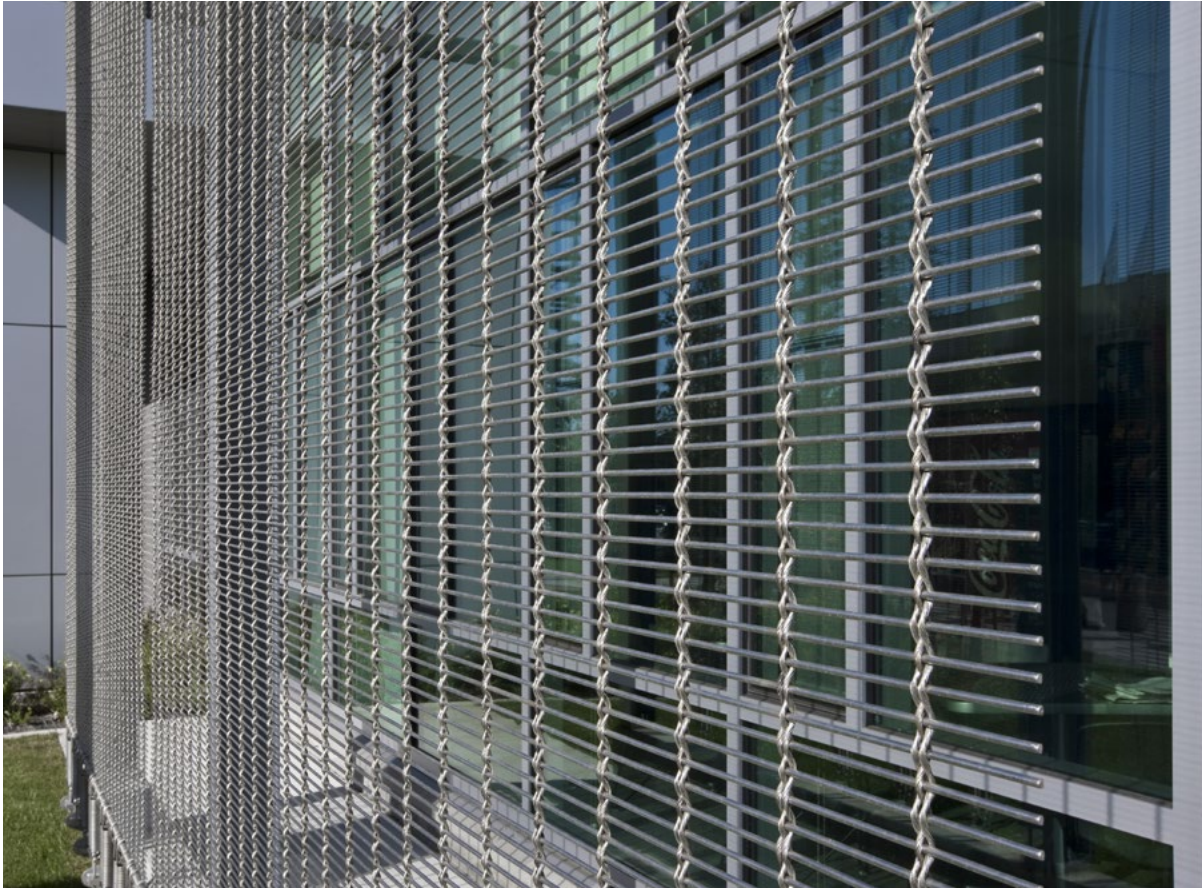
**Product**  
Futura 3110

**Attachment Method**  
Woven in bar hooks  
and springs

**Architect**  
Roesling Nakamara  
Terada

**Size**  
7,200 ft²

Solar panels alleviate  
the extreme heat of  
Southern California,  
while enriching the  
architecture with a  
striking dimension  
of modernity.





**Project**  
Elwick Place

**Product**  
Omega 216

**Architect**  
Guy Hollaway Architects

**Application**  
Façades

**Attachment Method**  
Custom frame

**Size**  
16,150 ft<sup>2</sup>



In the suburbs of southeastern England, futuristic Elwick Place is a landmark and destination with shops, restaurants, a hotel and a cinema. A short distance from Ashford International Station, this is a stepping stone for many travelers embarking on their European adventures.





**Project**  
Holmenkollen

**Application**  
Façades  
Safety and Security

**Product**  
Sambesi  
Sambesi PC

**Attachment Method**  
Round steel and eyebolts,  
curved frame

**Architect**  
Julien de Smedt,  
JDS Architects

**Size**  
77,500 ft²

The fluid lines of this ski jump in Norway reflect the dynamics of the leap, while the stainless steel façade protects the athletes on the hill from the wind. The stainless steel metal fabric's transparency adds to the visual effect of the futuristic flight concept.



**Project**  
Kunsthalle Mannheim

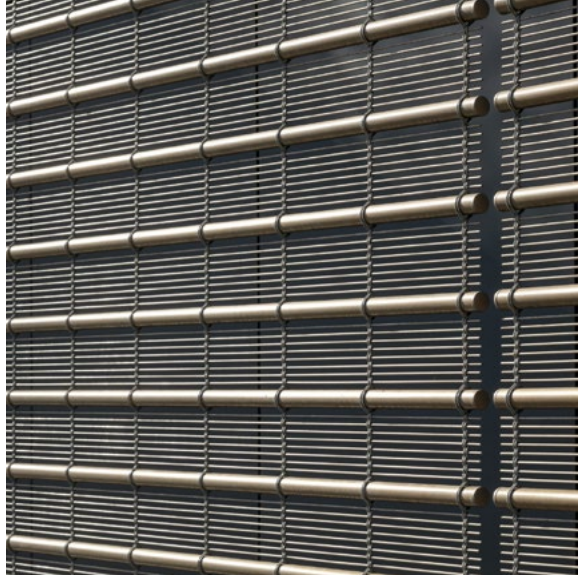
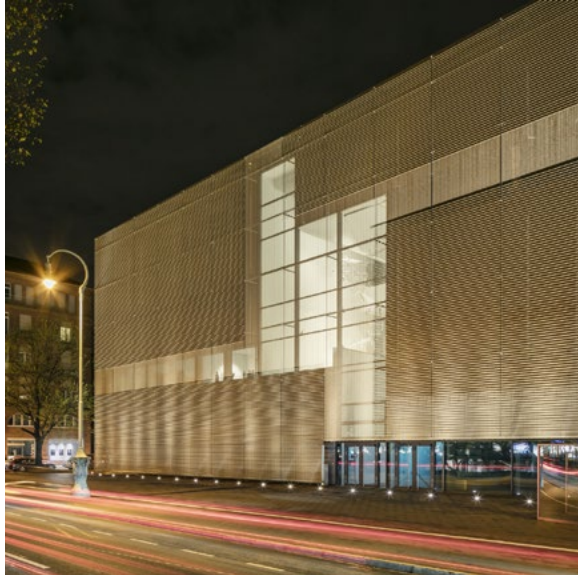
**Product**  
Tigris with woven pipes

**Architect**  
GMP

**Application**  
Façades  
Solar Management

**Attachment Method**  
Flats with clevis

**Size**  
49,500 ft<sup>2</sup>



This façade provides a signature look to a landmark museum while protecting the art inside from the sun's harsh glare. Sophisticated weaving techniques help the metal fabric withstand the region's intense wind and snow.





Project  
Henry Madden Library  
CSU Fresno

Application  
Mediamesh

Product  
Mediamesh V6xH5.0

Attachment Method  
Woven in bar eyebolts  
top and bottom

Architect  
AC Martin/  
Narduli Studio

Size  
700 ft<sup>2</sup>



Centuries-old Native American weaving traditions inform the architecture of this library at CSU Fresno and are experienced literally in a video installation by artist Susan Narduli, played on a large-scale Mediamesh installation.



**Project**  
Kauffman Center for  
the Performing Arts

**Application**  
Acoustic  
Partitions  
Walls

**Product**  
Tigris PC

**Attachment Method**  
Frames

**Architect**  
Moshe Safdie Architects

**Size**  
8,000 ft²







Woven metal fabric behind the Herzberg Hall's celebrated organ is both beautiful and acoustically transparent, while appearing as a continuous panel from floor to ceiling.



#### Project

California ISO  
Headquarters

#### Product

Omega 1510

#### Architect

Dreyfuss and Blackford

#### Application

Façades  
Solar Management

#### Attachment Method

Extended loops  
and eyebolts

#### Size

1,000 ft<sup>2</sup>



Metal fabric provides solar control and day-lighting for this west facing area located strategically outside the two-story public wing of the California ISO headquarters in Folsom.







#### Project

UF Research and  
Academics Center

#### Application

Façades  
Solar Management

#### Product

Escale 7x1

#### Attachment Method

Flats with clevis

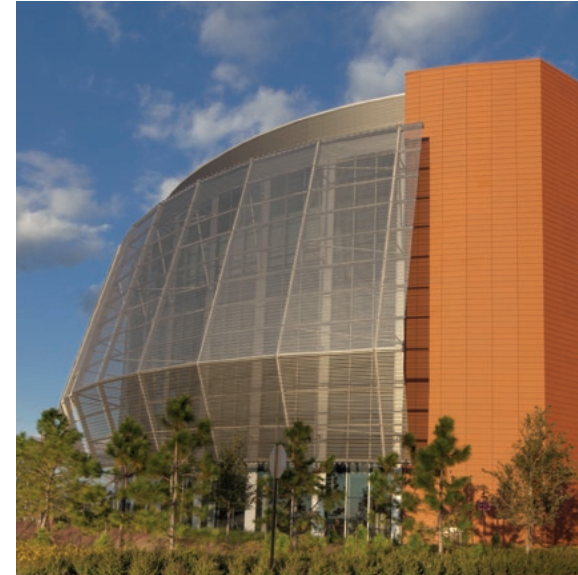
#### Architect

HOK Architects

#### Size

8,250 ft<sup>2</sup>

72/73



The University of  
Florida's landmark  
building features an  
immense sunshade made  
of architectural mesh.  
Natural lighting, sun  
control and transparency  
are accomplished with  
striking flair.



**Project**  
Tonhalle Dusseldorf

**Product**  
Omega 1540

**Architect**  
HPP Architects

**Application**  
Acoustic  
Ceilings

**Attachment Method**  
Frames

**Size**  
27,000 ft<sup>2</sup>



Bronze tones are threaded throughout the woven stainless steel fabric, giving the renovated concert hall a unique look, while the resulting acoustics provide a surround sound without interference and with improved reverb.







Project  
Cleveland Institute of Art

Product  
Mediamesh V4xH5.0

Architect  
Stantec

Application  
Mediamesh

Attachment Method  
Woven in bar eyebolt  
top and bottom

Size  
1,550 ft²

Pushing the envelope, Mediamesh provides a platform to communicate and inspire at this art school in Cleveland.





**Project**  
Ascot Racecourse

**Application**  
Safety and Security  
Solar Management

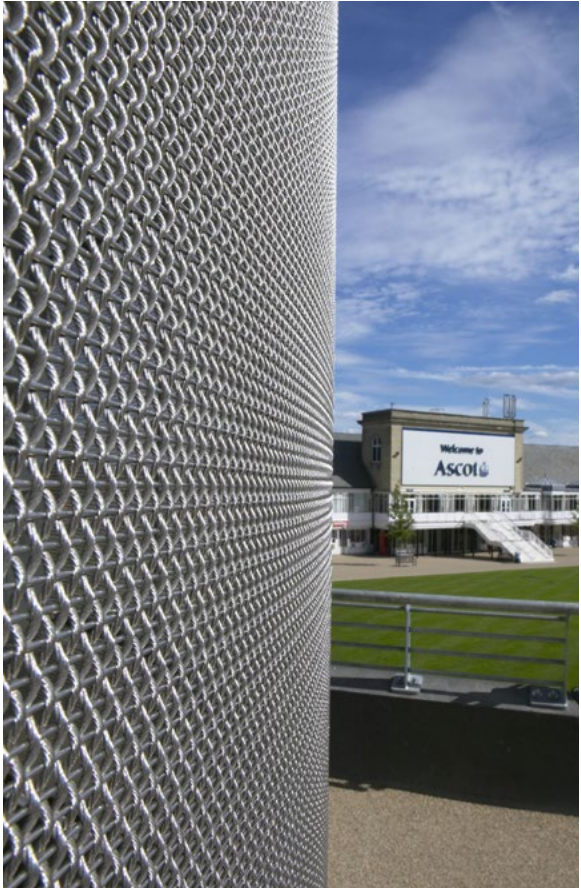
**Product**  
Baltic

**Attachment Method**  
Flats with clevis

**Architect**  
HOK

**Size**  
17,000 ft²

Bold towers clad with architectural mesh make an impressive statement at this historic racecourse in Berkshire, England.





Project

Turkish Contractors  
Association  
Headquarters

Application

Façades  
Solar Management

Product

Omega 1510  
Omega 1520  
Omega 1530

Attachment Method

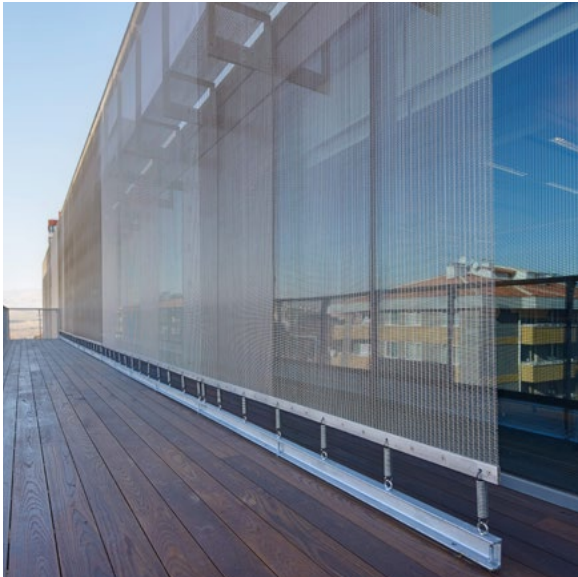
Flats with hooks  
and springs

Architect

Avci Architects

Size

9,700 ft²



The metal fabric façade contributes to a building constructed to LEED platinum levels. While the façade helps solar management, solar cells help power the building and a geothermal heat pump helps to maintain an ideal temperature.





#### Project

Piper High School

#### Product

Omega 1510

#### Architect

DLR Group

#### Application

Etched Graphics  
Façades  
Solar Management

#### Attachment Method

Extended loops  
with eyebolts

#### Size

520 ft<sup>2</sup>



Sunshading, daylighting and graphic design combine to create a unique, 21st century learning environment. An etched pirate mascot promotes school spirit and creates an easily identifiable main entrance area.





**Project**  
Newark Liberty  
International Airport

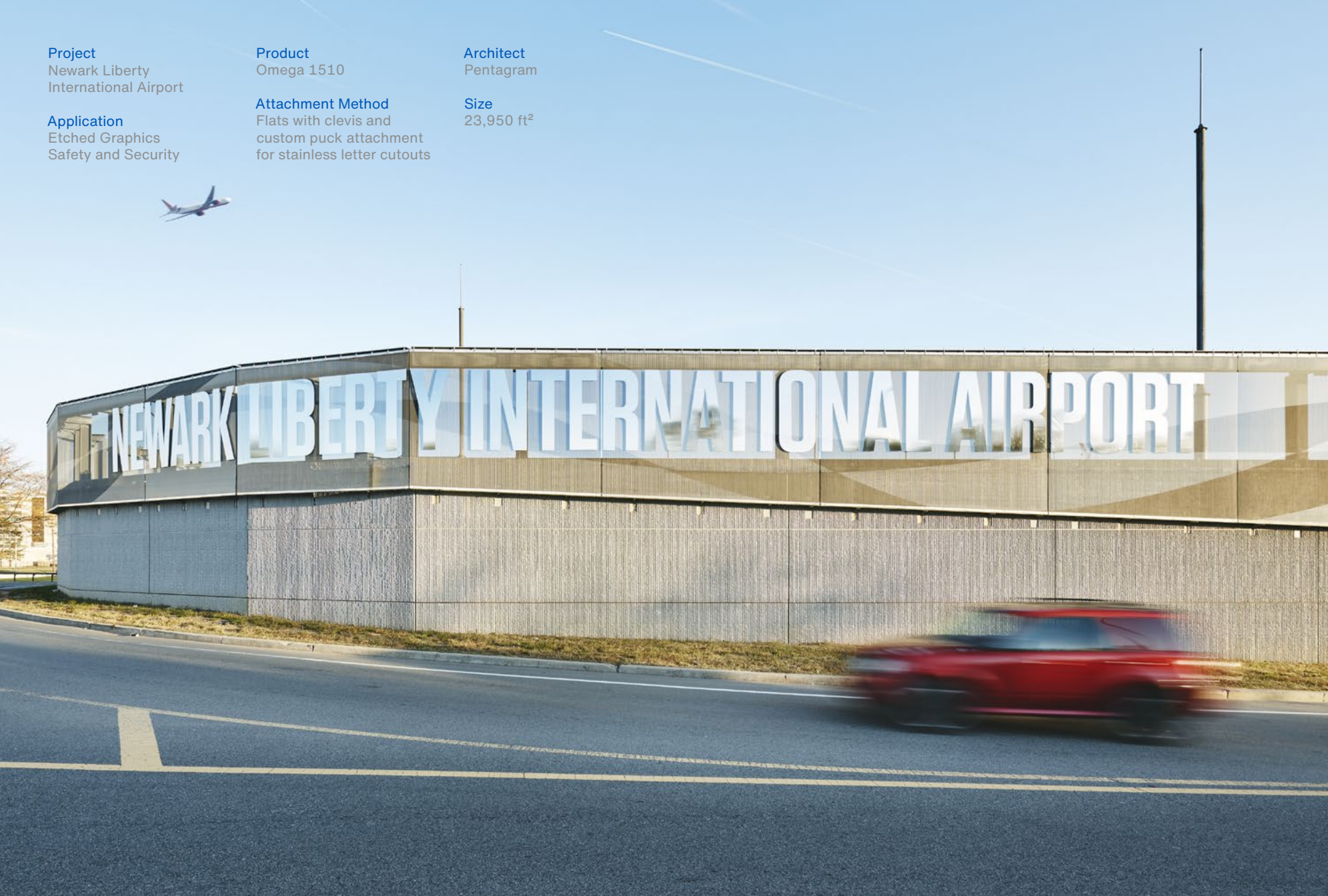
**Application**  
Etched Graphics  
Safety and Security

**Product**  
Omega 1510

**Attachment Method**  
Flats with clevis and  
custom puck attachment  
for stainless letter cutouts

**Architect**  
Pentagram

**Size**  
23,950 ft<sup>2</sup>



With approximately 1,200 flights per day, Newark is the busiest airport in the metropolitan area of New York City. Travelers arriving at the airport are greeted by stainless steel letters that float above etched graphics alluding to aviation.



A clerestory screen of tension mounted, bronze metal fabric softly diffuses the natural light providing an ethereal, spiritual calm in a seminary chapel.

**Project**  
Union Presbyterian  
Seminary

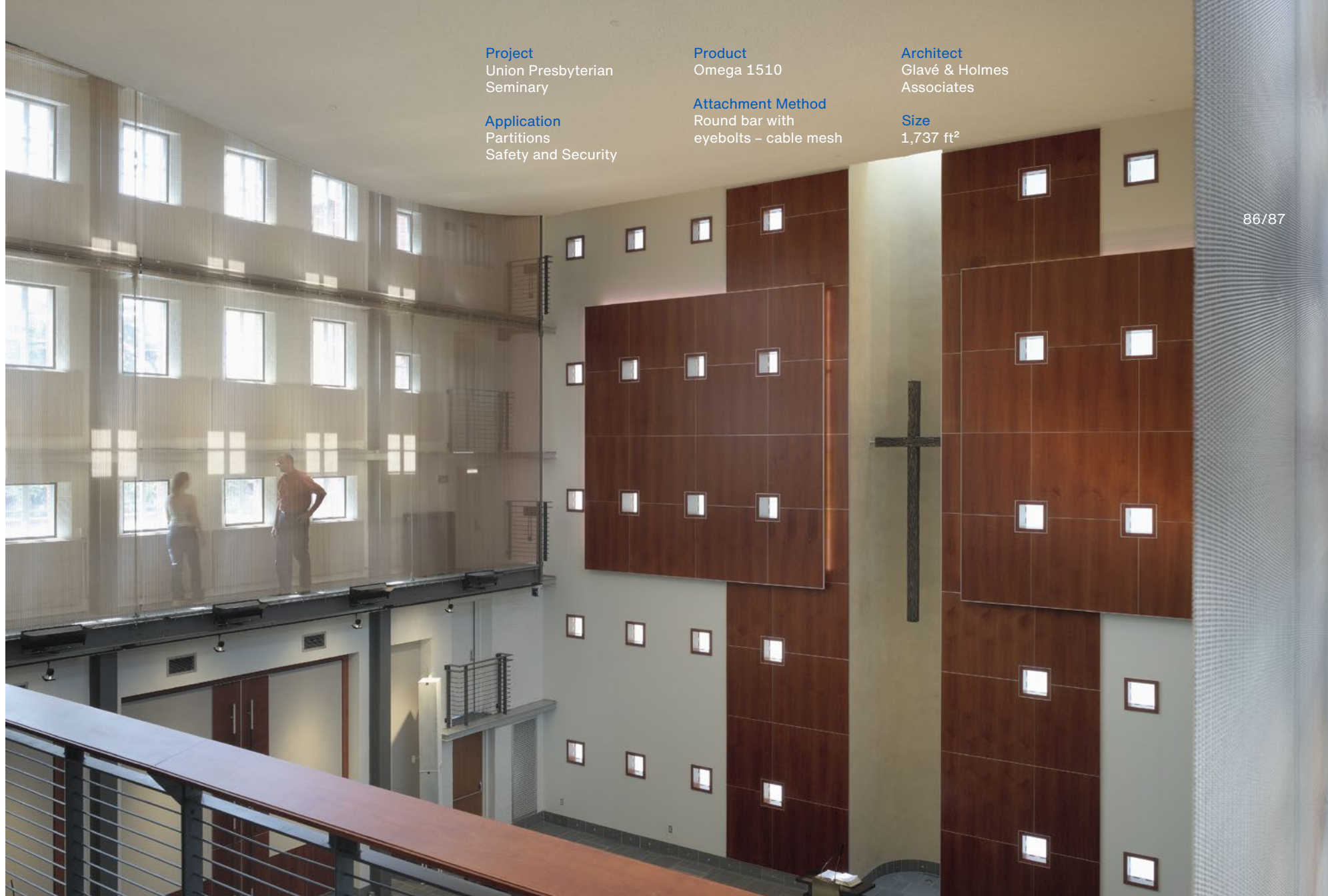
**Application**  
Partitions  
Safety and Security

**Product**  
Omega 1510

**Attachment Method**  
Round bar with  
eyebolts – cable mesh

**Architect**  
Glavé & Holmes  
Associates

**Size**  
1,737 ft<sup>2</sup>





Project  
FIFA World Headquarters

Product  
Omega 1520

Architect  
Tilla Theus

Application  
Façades  
Solar Management

Attachment Method  
Flats with clevis

Size  
26,000 ft<sup>2</sup>





A custom metal fabric wraps around the FIFA World Headquarters, pirouetting like a world class soccer player. The fabric, woven of stainless steel and anodized aluminum rods is installed with custom engineered 90° changes of direction.





# Index

Application	Project	Page
Acoustic	Kauffman Center for the Performing Arts	66
	Koningin Elisabethzaal	36
	Paris Longchamp	32
	Tonhalle Dusseldorf	74
Ceilings	European Court of Justice	10
	GKD Headquarters	12
	Koningin Elisabethzaal	36
	Tonhalle Dusseldorf	74
Etched Graphics	Juan Valdez Café	54
	Newark Liberty International Airport	84
	Piper High School	82
	Rallye BMW	30
	Yankee Stadium	50
Façades	California ISO Headquarters	70
	Capital Gate Tower	04
	Children’s Activity Center	20
	City of Hope Medical Center	48
	École d’Art de Calais	40
	Elwick Place	58
	European Court of Justice	10
	FIFA World Headquarters	88
	Holmenkollen	60
	Juan Valdez Café	54
	Kunsthalle Mannheim	62
	Louis Vuitton Atelier	24
	Mumuth Music and Theater School	44
	Oxnard Civic Center	56
	Paris Longchamp	32
	Piper High School	82

Application	Project	Page
Façades, cont.	Raiffeisenlandesbank Raaba	38
	Rallye BMW	30
	Turkish Contractors Association Headquarters	80
	UF Research and Academics Center	72
Mediamesh	American Airlines Arena	06
	Cleveland Institute of Art	76
	Henry Madden Library CSU Fresno	64
	Piazza del Duomo	16
	Stanford University Bass Biology Building	22
Parking Façades	Brookline Place	18
	Samsung American Headquarters	08
Partitions	Beijing National Opera	28
	European Court of Justice	10
	Kauffman Center for the Performing Arts	66
	Phelps Dunbar	46
	Tencent Headquarters	42
	Union Presbyterian Seminary	86
Safety and Security	Yankee Stadium	50
	Ascot Racecourse	78
	Chicago Art Institute	26
	Holmenkollen	60
	Newark Liberty International Airport	84
	Phelps Dunbar	46
	Tencent Headquarters	42
	Union Presbyterian Seminary	86
	Yankee Stadium	50



# Index

Application	Project	Page
Solar Management	Ascot Racecourse	78
	California ISO Headquarters	70
	Capital Gate Tower	04
	City of Hope Medical Center	48
	École d'Art de Calais	40
	FIFA World Headquarters	88
	GKD Headquarters	12
	Juan Valdez Café	54
	Kunsthalle Mannheim	62
	Louis Vuitton Atelier	24
	Mumuth Music and Theater School	44
	Oxnard Civic Center	56
	Paris Longchamp	32
	Piper High School	82
	Raiffeisenlandesbank Raaba	38
Specialties	Turkish Contractors Association Headquarters	80
	UF Research and Academics Center	72
Specialties	European Court of Justice	10
	GKD Headquarters	12
	Phelps Dunbar	46
Walls		
	European Court of Justice	10
	GKD Headquarters	12
	Kauffman Center for the Performing Arts	66
	Koningin Elisabethzaal	36
	Yankee Stadium	50





GKD-USA  
825 Chesapeake Drive  
Cambridge MD 21613

T 800 453 8616  
[gkdmetailfabrics.com](http://gkdmetailfabrics.com)